



Installation Guide

DEVILink™ FT

Floor thermostat



www.DEVI.com

DEVI® 

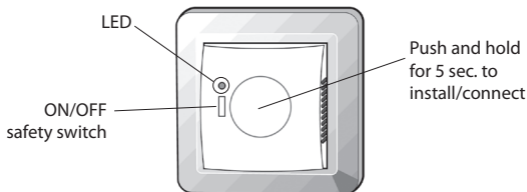
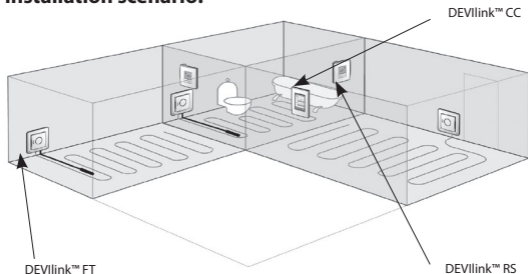
Table of Contents

| | | |
|----------|--|-----------|
| 1 | Introduction | 3 |
| 2 | Placement of DEVlink™ FT | 4 |
| | 2.1 Operation mode | 4 |
| | 2.2 Sensor combination. | 4 |
| 3 | Installation of DEVlink™ FT | 6 |
| | 3.1 Configuration | 7 |
| 4 | Factory reset a DEVlink™ FT | 7 |
| 5 | Technical specifications | 7 |
| 6 | Radio Equipment Directive | 9 |
| 7 | Warranty. | 9 |
| 8 | Disposal instructions. | 10 |

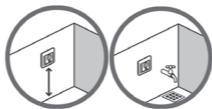
1 Introduction

The DEVlink™ FT (Floor Thermostat) is a device for switching the heating element ON/OFF. In connection with a floor sensor it can also measure the temperature in the floor (FTS). Secondly you have the possibility to use the FT as a on and off switch to other equipments manually or by schedule.

Installation scenario:



2 Placement of DEVIlink™ FT



Installation and placement must be according to local building regulations.

2.1 Operation mode

DEVIlink™ FT supports two types of operation modes.

1. Heating regulation
1. On/OFF switching

When used in heating regulation mode you have to consider the following advices for controlling the heating.

When used as simple ON/OFF mode do not connect floor sensor.

2.2 Sensor combination

When installing the DEVIlink™ FT you need to consider the type of heating and thus which sensors should be used. There are three options:

1. **Comfort heating:** Constant temperature on the floor in bathrooms and other rooms where a comfortable warm surface is required. Install the Floor sensor and choose Floor regulation for the room when doing the configuration.
2. **Total heating:** Control of room temperature in living rooms etc. Install the floor sensor and a DEVIlink™ RS. Choose Combined regulation when doing the configuration on the DEVIlink™ CC.
3. **No floor sensor:** A floor sensor is not present, and cannot be installed. You must install a DEVIlink™ RS. Choose Room regulation.

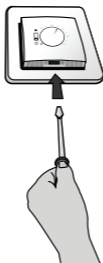
Be aware that temperature control is less accurate without the floor sensor and that all DEVIlink™ FTs in a room need to have the same sensor configuration.

DEVI recommends always installing a floor sensor.

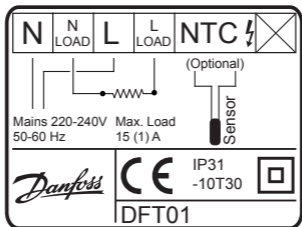
Do not install floor heating system without a floor sensor when the heating element is installed on or beneath wooden surfaces and other surfaces sensitive to temperature!

3 Installation of DEVIlink™ FT

1. To remove the front cover, gently press the release tabs under the bottom of the thermostat with a screwdriver. Then remove the front.



2. Connect the thermostat according to the connection diagram.



3.1 Configuration

See Step-by-Step guide in DEVlink™ CC instruction manual.

| | |
|-----------------------------|--|
| Green LED ON | Standby |
| Red LED ON | Heating |
| Green LED fast flash | Inclusion or link test |
| Red LED short flash | Inclusion not OK, goes to not included. Linktest not OK, goes to missing link |
| RED LED slow flash | Sensor failure |

4 Factory reset a DEVlink™ FT

Turn off power on the safety switch on the front. Hold the install button in while pushing ON the safety switch and keep the install button pressed until the LED gives a red flash (approx. 5 sec.)

5 Technical specifications

| | |
|----------------------------------|-----------------------|
| Operation voltage | 180-250 VAC, 50/60 Hz |
| Standby power consumption | Max. 1 W |

| | |
|--|--|
| Relay: <ul style="list-style-type: none"> • Resistive load • Inductive load | 230 V ~ 15 A / 3450 W $\cos \phi = 0.3$ Max. 1 A |
| Sensing unit | NTC 15 kOhm at 25°C |
| Sensing values: <ul style="list-style-type: none"> • 0°C • 20°C • 50°C | 42 kOhm 18 kOhm 6 kOhm |
| Regulation | PWM |
| Ambient temperature | -10° to +30°C |
| Sensor failure monitoring | The thermostat has a built-in monitoring circuit, which will switch off the heating if the sensor is disconnected or short-circuited |
| Transmission frequency | 868.42 MHz |
| Transmission range in normal buildings | Up to 30 m |
| Transmission power | Max. 1 mW |
| IP class | 31 |
| Dimensions | 85 mm × 85 mm × 21 mm |

6 Radio Equipment Directive

SIMPLIFIED EU DECLARATION OF CONFORMITY

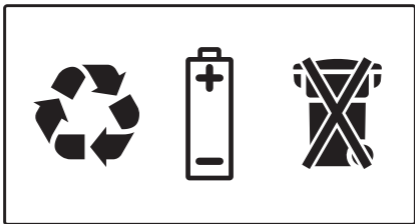
Hereby, Danfoss A/S declares that the radio equipment type DEVlink™ FT is in compliance with Directive 2014/53/EU

The full text of the EU declaration of conformity is available at the following internet address: **devi.danfoss.com**

7 Warranty



8 Disposal instructions



Danfoss A/S
Electric Heating Systems
Ulvehavevej 61
7100 Vejle
Denmark

Phone: +45 7488 8500
Fax: +45 7488 8501
E-mail: info@DEVI.com
Web: www.DEVI.com

Danfoss can accept no responsibility for possible errors in catalogues, brochures and other printed material. Danfoss reserves the right to alter its products without notice. This also applies to products already on order provided that such alterations can be made without subsequential changes being necessary in specifications already agreed. All trademarks in this material are property of the respective companies. DEVI and the DEVI logo-type are trademarks of Danfoss A/S. All rights reserved

